

CERTIFIED RECORD OF LAND CORNER MONUMENTATION

History of original corner establishment:

The original corner was set in 1881 by Rufus S. Moore under Contract No. 382, dated March 23, 1881.

The original notes state:

North between Secs 11 & 12

80.00 Set a pine post for cor to secs 1,2,11&12 from which

- A Y. Pine 14 ins dia bears N 50° E, 208 lks
- A Y. Pine 30 ins dia bears N 48° W, 145 lks
- A Y. Pine 36 ins dia bears S 53° W, 207 lks
- A Y. Pine 12 ins dia bears S 7° E, 228 lks

DIAGRAM

T10S R32E

S21S1

---+---

S111S12

Description of corner evidence found:

Found no evidence of the original post.

The rotted stump of a pine bears N 50° E, 143.2 ft (N 50° E, 218 lks).

A 48" P.Pine bears N 48° W, 95.4 ft to face (N 48° W, 145 lks), burned face.

A 46" P.Pine bears S 53° W, 137.4 ft to face (S 53° W, 207 lks), scribing visible in an opened face.

A 31" P.Pine bears S 6° E, 151.1 ft to face (S 7° E, 228 lks), healed scars.

Description of monument and accessories I establish to perpetuate the original location of this corner:

I reestablish this corner at mean distances from the NW, SW, and SE bearing trees. Set a 2x28" aluminum monument 18" in the ground in a mound of stone.

I establish new bearing trees:

- A 6" P.Pine bears N 32° E, 21.6 ft, scribed T10SR31ES1BT.
- A 12" P.Pine bears N 48° W, 55.5 ft, scribed T10SR31ES2BT.
- A 13" P.Pine bears S 30° W, 66.5 ft, scribed T10SR31ES11BT.
- A 12" P.Pine bears S 20° E, 94.6 ft, scribed T10SR31ES12BT.

T10S R31E

S21S1

---+---

S111S12

PLS1918

1988

New BTs have 3/4" brass washers marked PLS1918 attached to the BT blaze, faces and bands painted with red tree marking paint, and BT tags and Attention or Land Survey Monument signs. A steel fence post with Attention or Land Survey Monument sign is driven approximately 3-5 feet from the corner.

Sun Cadastral Survey, Cont No. 53-04H1-7-4011

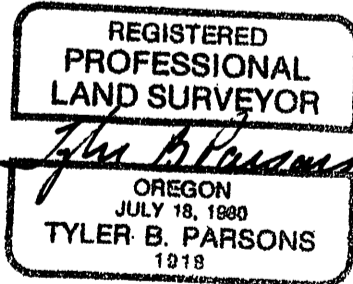
Field Book: 4-15 & 5-33

Work accomplished: 7/30/88

Witnesses: Tyler Parsons, Louise Parsons
Sharon Parsons, Douglas Parsons

Job No.: 87221

PARSONS SURVEYING
1915 S.E. Stone Street
Corvallis, OR 97333
(503) 752-7515



Office of COUNTY SURVEYOR County of GRANT
State of OREGON, I hereby certify that the within instrument was filed in this office
for record on the 7th day of Feb, 1989

[Signature] by _____
(COUNTY OFFICIAL) (DEPUTY)